

8/17/09

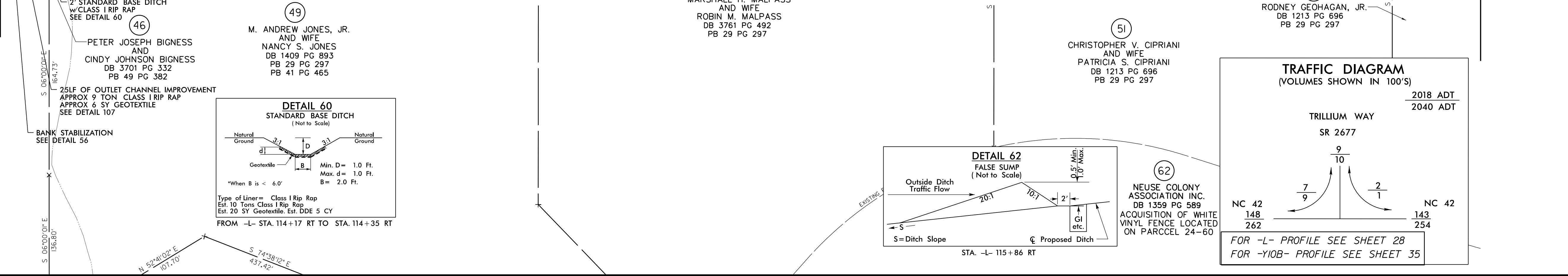
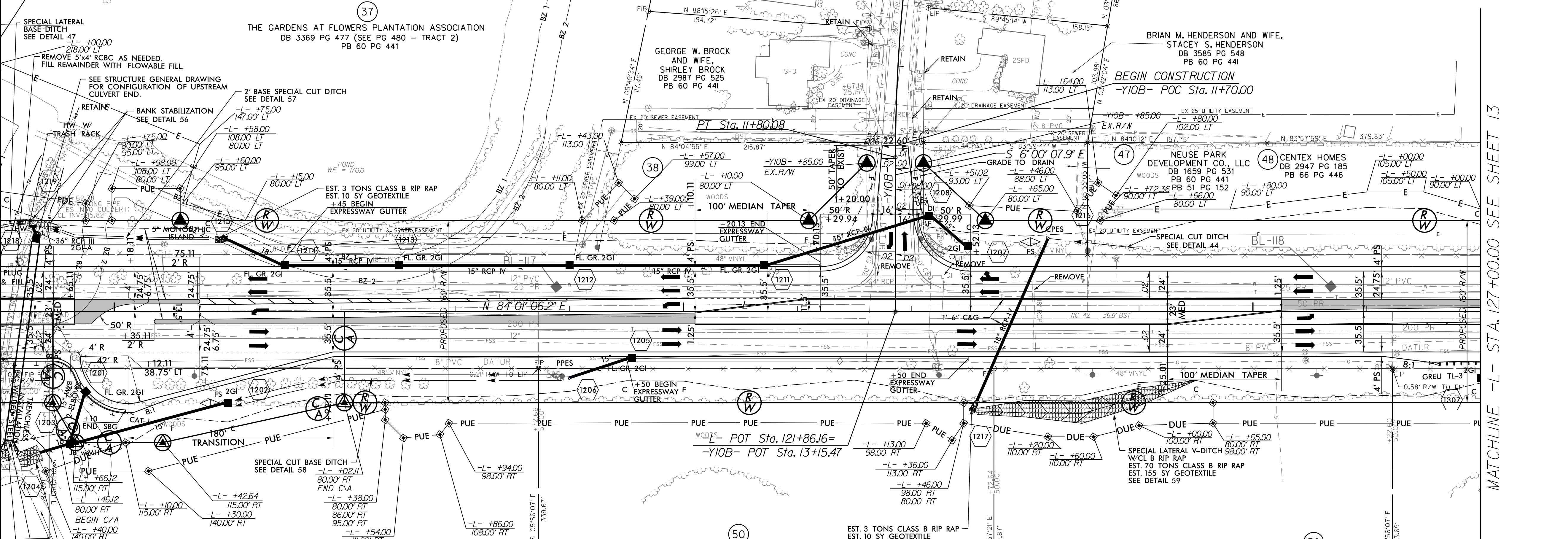
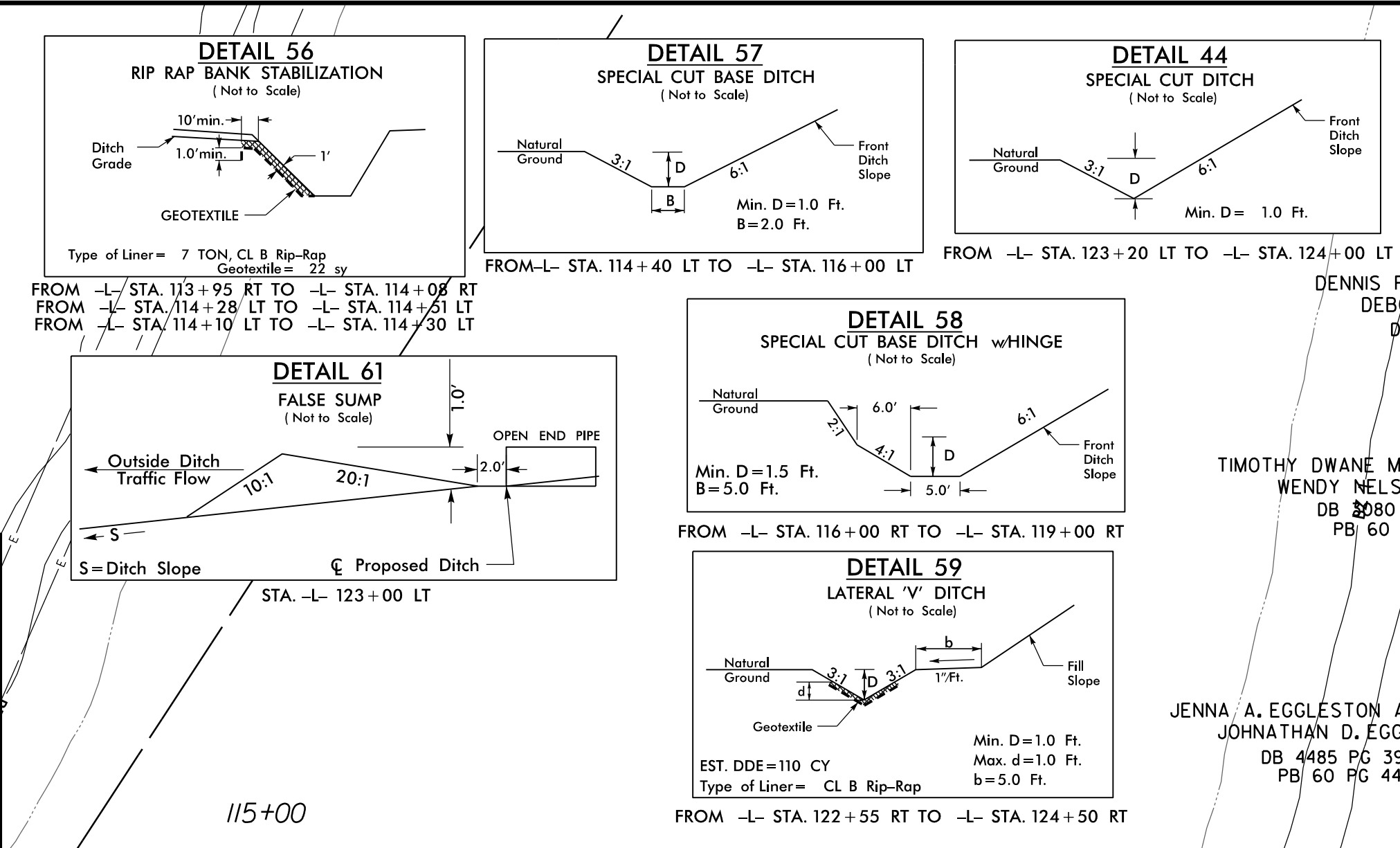
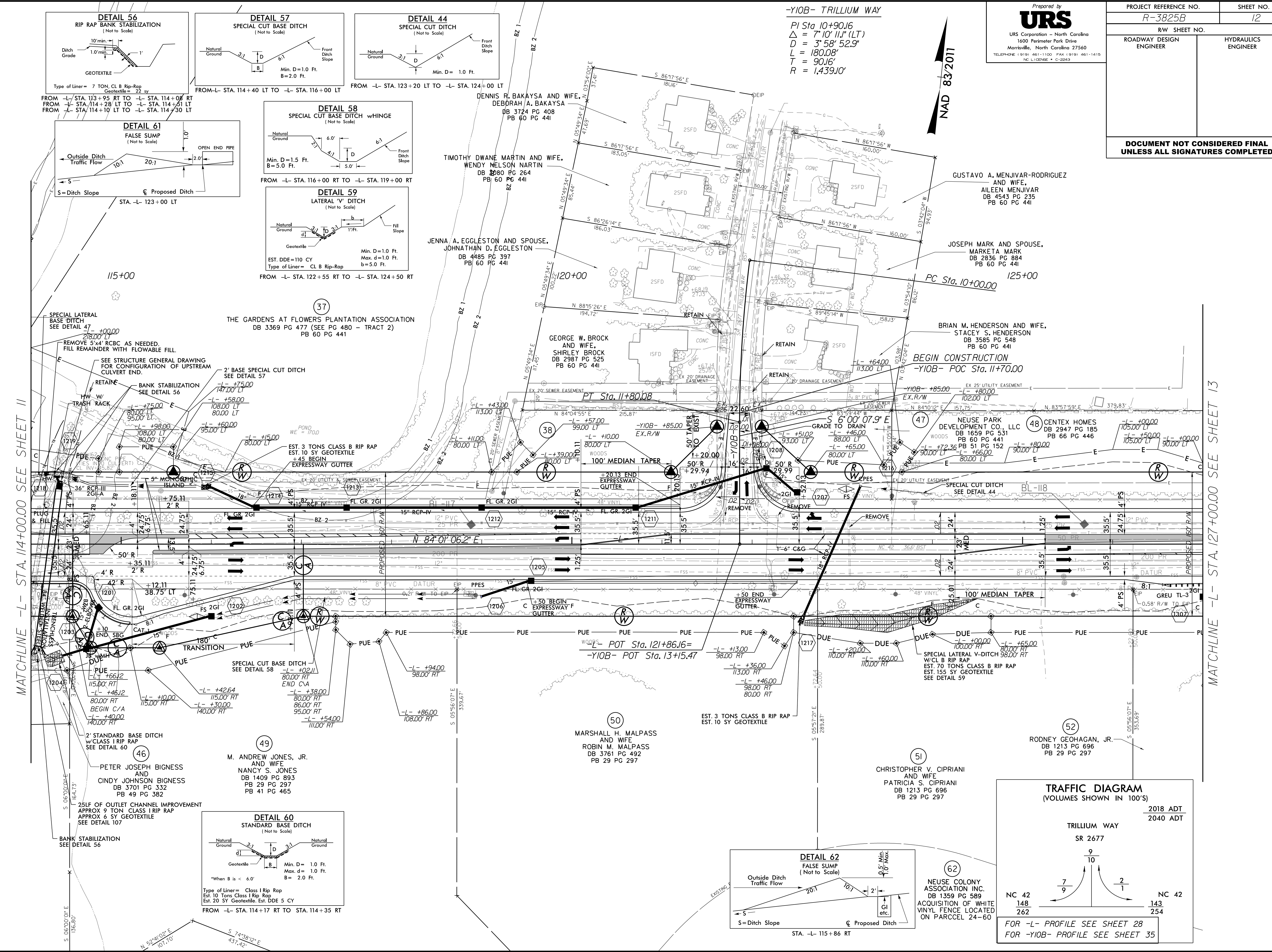
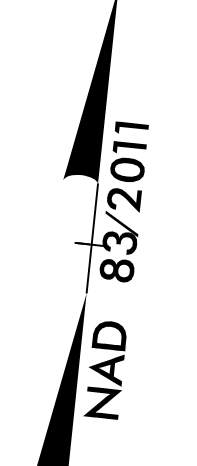
PROJECT REFERENCE NO. **R-3825B** SHEET NO. **12**

Prepared by **URS**
 URS Corporation - North Carolina
 1600 Perimeter Park Drive
 Morrisville, North Carolina 27560
 TELEPHONE 1 919 461-1100 FAX 1 919 461-1415
 NC L10296E * C-2943

RW SHEET NO. **ENGINEER** HYDRAULICS ENGINEER

DOCUMENT NOT CONSIDERED FINAL UNLESS ALL SIGNATURES COMPLETED

-YIOB- TRILLIUM WAY
 $Pi Sta 10+90.16$
 $\Delta = 7'10" 11" (LT)$
 $D = 3'58" 52.9"$
 $L = 180.08'$
 $T = 90.16'$
 $R = 1,439.10'$



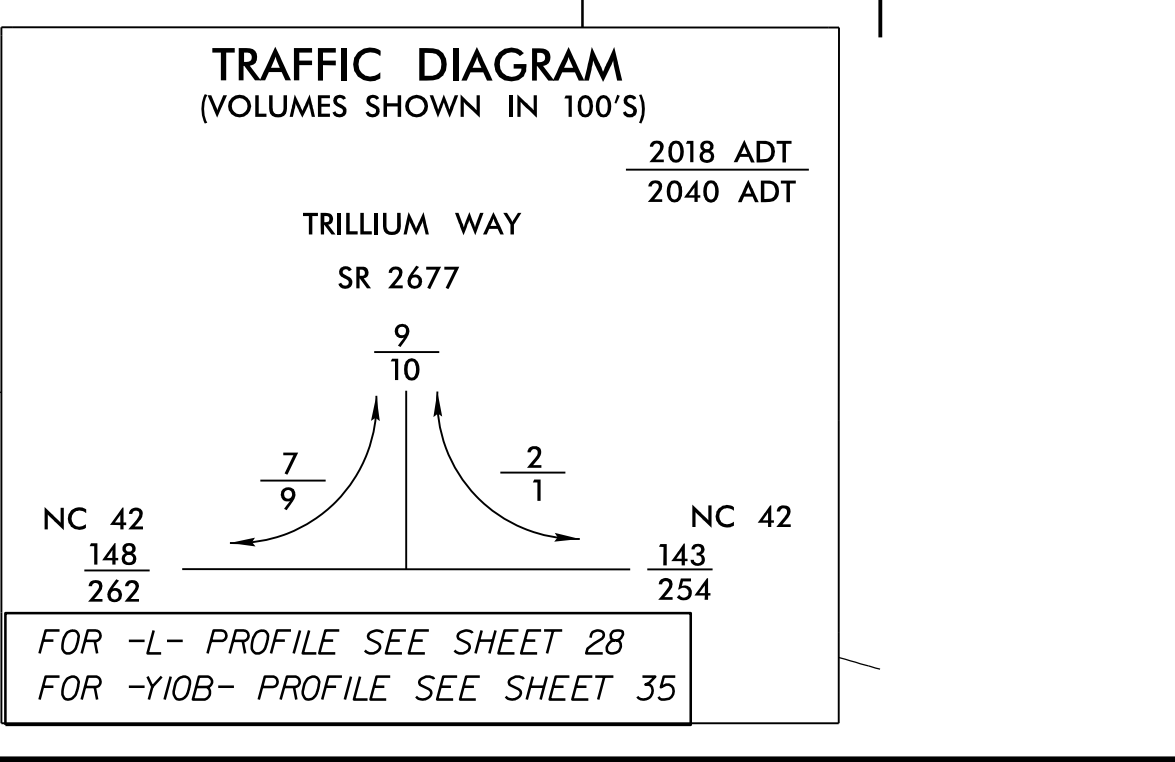
REVISIONS

1 - 6"x6" RCBC REPLACED WITH 84" WELDED STEEL -L- STA. 114+00 TO STA. 114+35 (08/23/2017) TH

2 - COMBINED PARCEL 37 AND 38 TO BE 37, PARCEL 46 INFORMATION UPDATED, AND PARCEL 62 ADDED (10/02/2017) TH

MATCHLINE -L- STA. 114+00.00 SEE SHEET 11

MATCHLINE -L- STA. 127+00.00 SEE SHEET 13



8/18/2017
R:\182017\Projects\182017\182017-01\182017-01.dgn